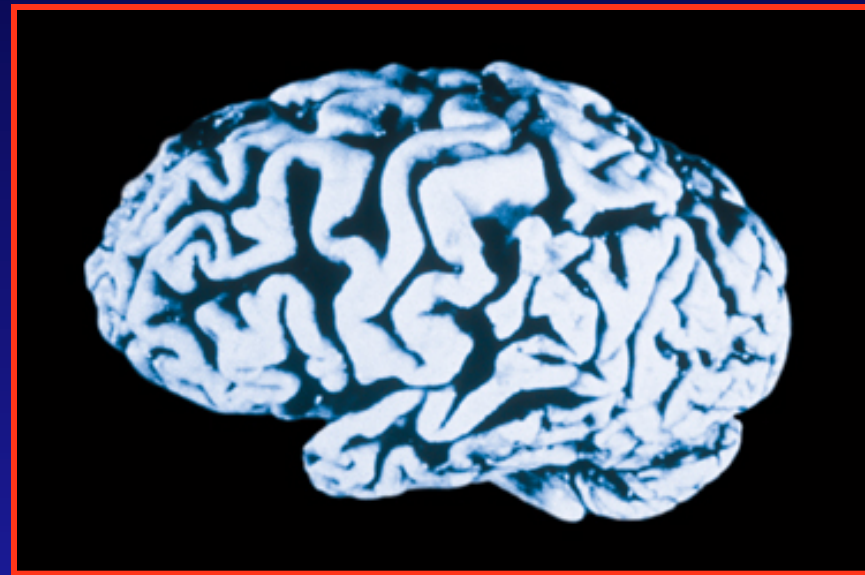


Dementia

- **Impairment of memory**
- **and 2 other cognitive domains**
 - orientation**
 - attention**
 - language**
 - visual spatial functions**
 - executive functions**
 - motor control**
 - and praxis**

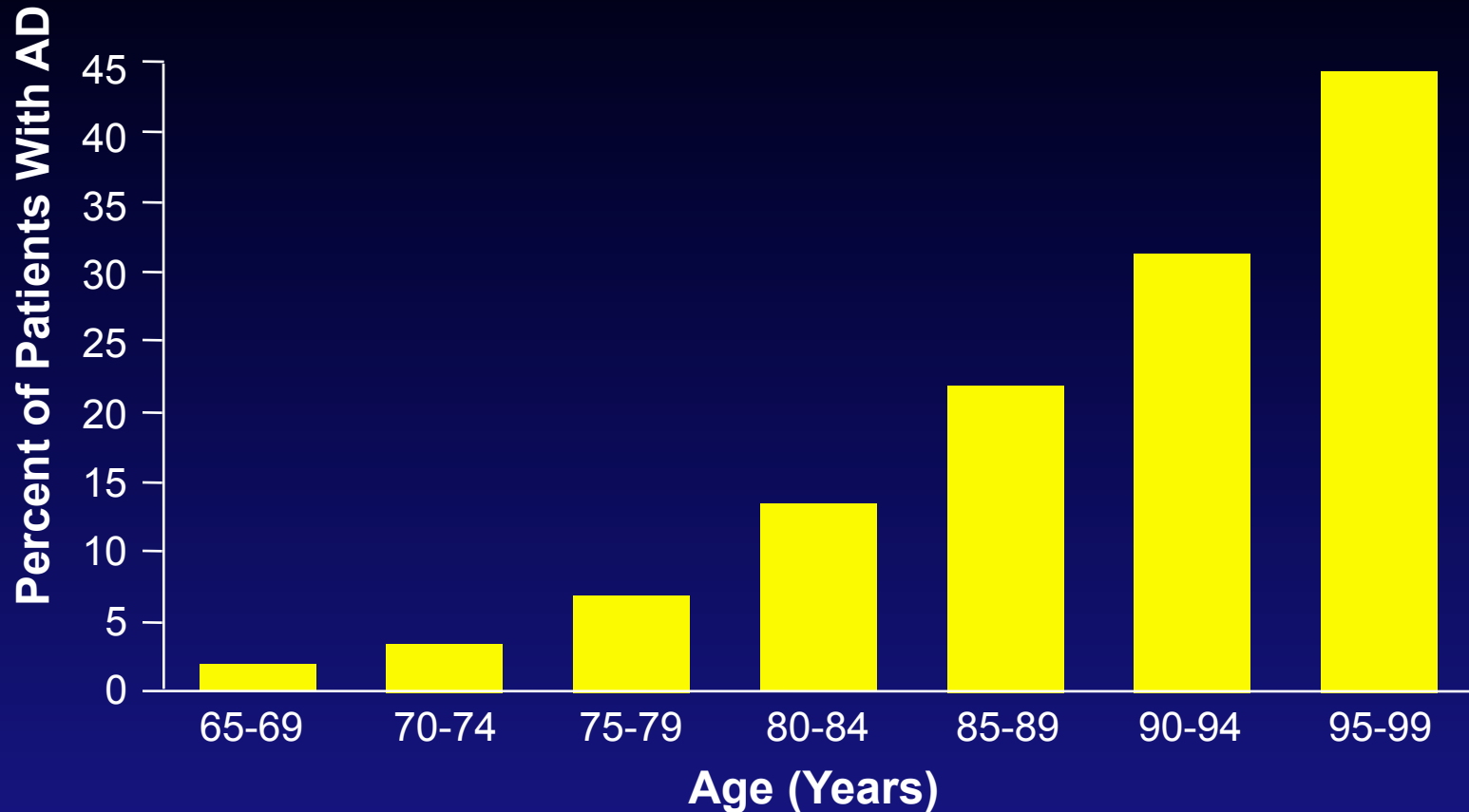


Alzheimer's Dementia (AD)

Progressive disease

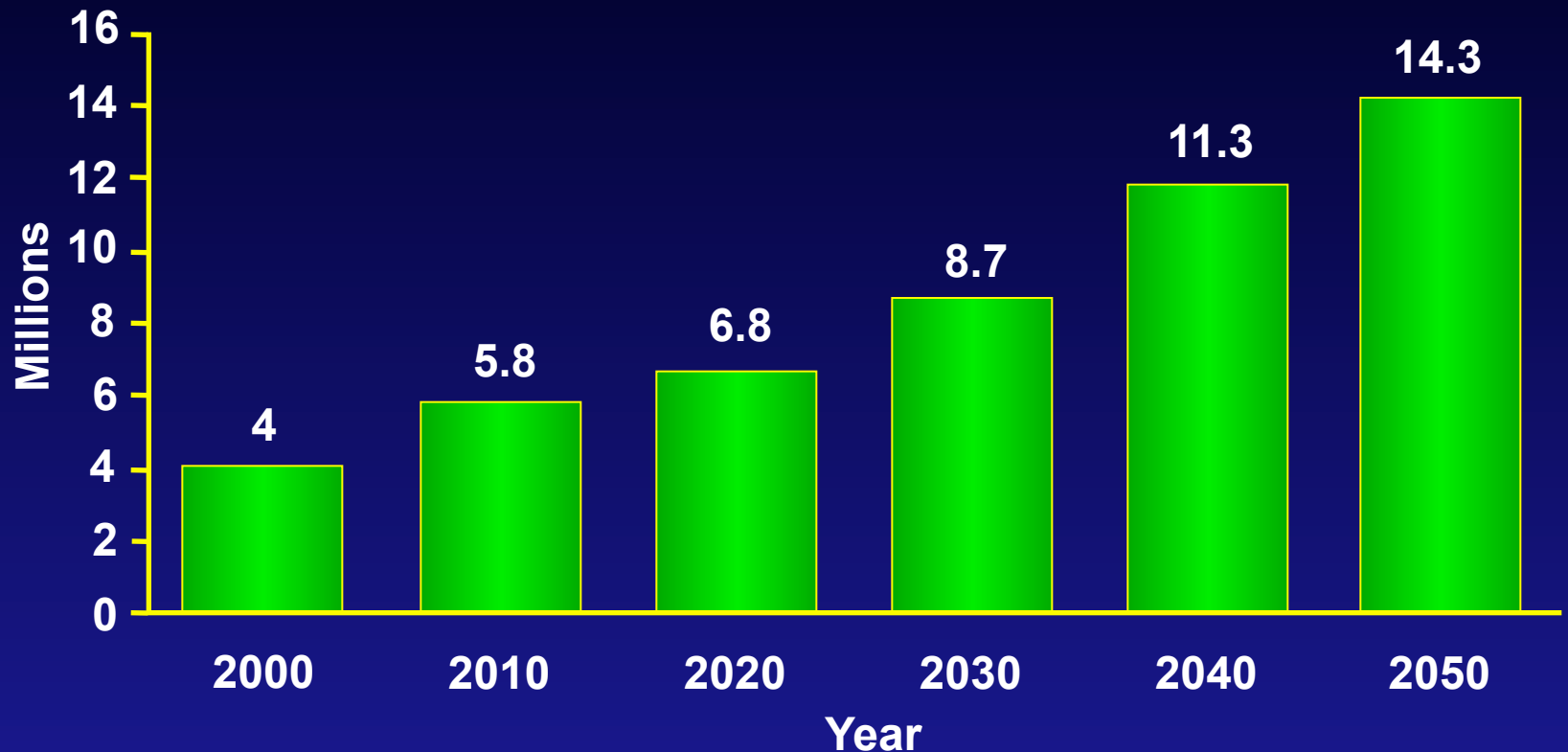
- **A**ctivities of daily living
 - **B**ehavior – Personality, Executive function
 - **C**ognitive functions
- AD is the **fourth** leading cause of **death** due to disease for people > 65 years of age in the United States

PREVALENCE OF AD WITH INCREASING AGE



The Korean mean life expectancy is 81 years (16th in the world) and the US life expectancy at 79 (WHO)

Projected Prevalence of AD in the US



Alzheimer's Dementia

- **The care of AD will require a team of different providers for comprehensive care.**
- **The Alzheimers Association is a good resource and has material in Korean for the patient and families.**
24시간/7일 지원전화 800.272.3900 | alz.org/socal
- **There is hope for AD and it relies on increased research to find better early diagnostic markers, better treatments and hopefully a cure.**